

**Lowery
Systems,
Inc.**

*Wireless Warehouse
Automation System
For FACTS*



**Lowery
Systems,
Inc.**

Wireless Warehouse
Automation System
For FACTS

Wireless Warehouse
Automation System For FACTS

Presentation Agenda

- *What It Is*
- *What It Is Not*
- *Benefits*
- *Features*
- *System Requirements*
- *Configuration Options*
- *Primary Functions and Basic Operations*
- *Questions and Answers*

Wireless Warehouse
Automation System For FACTS

What It Is

- *A Basic Wireless Extension of FACTS*
- *Select FACTS Functions*
- *Inventory Interactive*
- *Radio Frequency Handheld-Oriented*
- *Barcode Aware*
- *A First Step Toward a Warehouse Management System*

Wireless Warehouse

Automation System For FACTS

What It Is Not

- *A Warehouse Management System, such as Radio Beacon's WMS*
- *A Stand-Alone or Separate Data Housing Arrangement Requiring Uploads or Downloads from FACTS to the Handheld Units*

Wireless Warehouse

Automation System For FACTS

Benefits

- *Reduced likelihood of wrong products selected when picking – the system will not permit picking an Item not on an order*
- *Automatic quantity translations based on U/M throughout system – Items set up with different barcodes for different U/Ms will register the correct pick quantity based on the barcode*

Wireless Warehouse

Automation System For FACTS

Benefits

- *Scanning Blind during receipt functions gets true count – not what "should" be there – providing additional verification of count accuracy and reduced likelihood of pilferage*
- *Different scan sequences allow for customizing for different types of shipping/receiving functions*
- *Selectable search hierarchy allows for your company's specific needs*

Wireless Warehouse
Automation System For FACTS

Features

- **Purchase Orders**
 - Handheld scanning of PO receipts
 - Handheld scanning of Serial and Lot Numbers
 - FACTS PO receipt entry allows assuming receipt of scanned records

Wireless Warehouse
Automation System For FACTS

Features

- **Sales Orders**
 - Handheld scanning of Sales Order Picking
 - Handheld scanning of Serial and Lot Numbers
 - FACTS SO confirmation allows assuming confirmation of scanned records

Wireless Warehouse
Automation System For FACTS

Features

- **Warehouse Transfers**
 - Handheld scanning of Picking and Receiving of Warehouse Transfers
 - Handheld scanning of Serial and Lot Numbers
 - FACTS Warehouse transfer shipment confirmation allows assuming confirmation of scanned records
 - FACTS Warehouse transfer receipt confirmation allows assuming receipt of scanned records

Wireless Warehouse
Automation System For FACTS

Features

- **Physical Inventory Counts**
 - Handheld scanning of Physical Count process, including Serial and Lot Numbers
 - Handheld Physical Count allows adding new items to the Items captured for counting

Wireless Warehouse
Automation System For FACTS

Features

- **Adjustments**
 - Handheld scanning of Item numbers, Lot numbers, and Serial numbers
 - Automatic selection of Adjustment code if user not authorized to select
 - Live update to FACTS inventory

Wireless Warehouse
Automation System For FACTS

Features

- **Item Repack**
 - Handheld scanning of Item numbers
 - Change U/M as needed
 - Live update to FACTS inventory

Wireless Warehouse
Automation System For FACTS

Features

- **Lot Transfers**
 - In-Flight option only
 - Transfer to existing lot
 - Create new lots from existing quantities

Wireless Warehouse
Automation System For FACTS

Features

- **Item Reference Builder**
 - Handheld scanning of Manufacturer or Supplier Product numbers
 - Handheld scanning of FACTS Product numbers
 - Live update to Standard Part Number file

Wireless Warehouse
Automation System For FACTS

Features

- **Other Features**
 - Handheld scanning to create Item Interchange (UPC code & Interleave 2 of 5)
 - All Handheld Item prompts allow UPC code or Interleave 2 of 5 instead of the item code to be scanned
 - Automatic quantity translations based on U/M throughout system

Wireless Warehouse
Automation System For FACTS

Features

- **Other Features**
 - All Handheld options prompt for Lot/Serial number where applicable
 - All Handheld options that require Lot/Serial number allow user to list available lot/serial numbers where applicable (except in receipt functions)

Wireless Warehouse
Automation System For FACTS

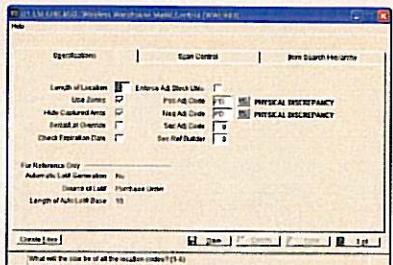
System Requirements

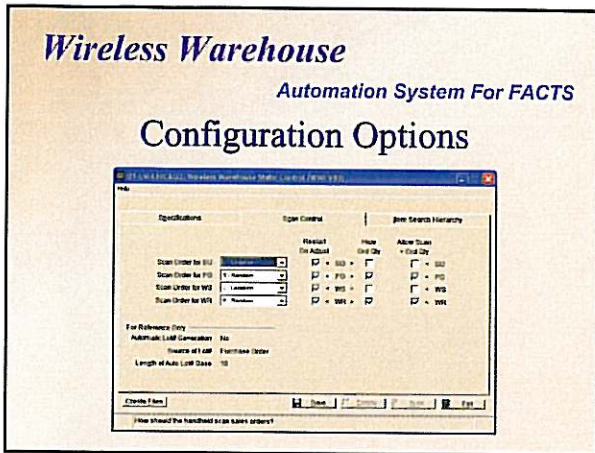
- **Software**
 - FACTS Version 7.5 or later
 - Optional In-Flight Package
- **Hardware**
 - Handheld Terminals
 - Wireless Remote Access Point(s) in Warehouse, Connected to the FACTS Network

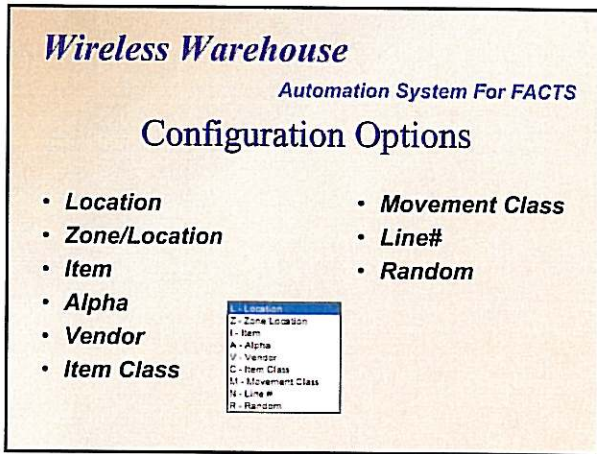


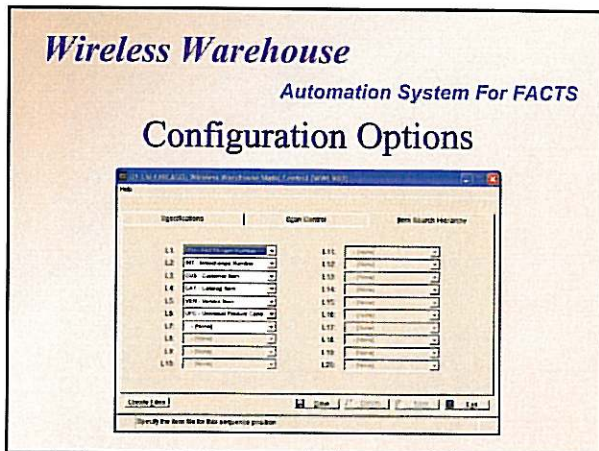
Wireless Warehouse
Automation System For FACTS

Configuration Options









Wireless Warehouse
Automation System For FACTS

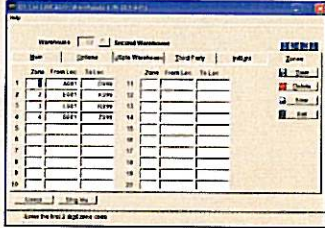
Configuration Options

- **ITM** – FACTS Item Number
- **INT** – Interchange Number
- **CAT** – Catalog Number
- **CUS** – Customer Item Number
- **VEN** – Vendor Item Number
- **AST** – ASTM Materials Code (User-defined)
- **UPC** – Universal Product Code (User-Defined)

- (None)
ITM - FACTS Item Number
INT - Interchange Number
CAT - Catalog Item
CUS - Customer Item
VEN - Vendor Item
AST - ASTM Materials Codes
UPC - Universal Product Code

Wireless Warehouse
Automation System For FACTS

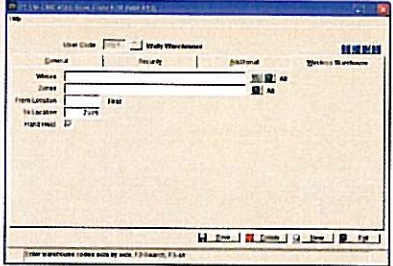
Configuration Options



- **Zones:**
 - *Optional*
 - *2-digit codes*
 - *Up to 20 ranges per warehouse*
 - *Location codes limited to number of digits specified in control file*

Wireless Warehouse
Automation System For FACTS

Configuration Options



Wireless Warehouse
Automation System For FACTS

Primary Functions/Basic Operations

<pre>09/21/07 Hand Held 15:38 Comp:01 Main Menu TR-WW1 1. Receiving 2. Shipping 3. Inventory Counts 4. Inventory Adjustments 5. System Maintenances Selection _ B-BACKUP</pre>	<pre>09/21/07 Hand Held 15:39 Comp:01 Receiving TR-WW1 1. Purchases 2. Warehouse Transfer Selection _ B-BACKUP</pre>
--	--

Wireless Warehouse
Automation System For FACTS

Primary Functions/Basic Operations

<pre>09/21/07 Hand Held 15:39 Comp:01 Shipping TR-WW1 1. Sales 2. Warehouse Transfer Selection _ B-BACKUP</pre>	<pre>09/21/07 Hand Held 15:40 Comp:01 Phys Count TR-WW1 1. Capture Qty's 2. Enter Counts Selection _ B-BACKUP</pre>
---	---

Wireless Warehouse
Automation System For FACTS

Primary Functions/Basic Operations

<pre>09/21/07 Hand Held 15:40 Comp:01 Inv Adjust TR-WW1 1. Adjustment Entry 2. Item Repack 3. Item Lot Transfer Selection _ B-BACKUP</pre>	<pre>09/21/07 Hand Held 15:40 Comp:01 File Maint TR-WW1 1. Item Ref Builder Selection _ B-BACKUP</pre>
--	--

Wireless Warehouse
Automation System For FACTS

Primary Functions/Basic Operations

- **Purchase Orders: Receipts**
 - Purchase Order # – Scan or key enter
 - Items – Scan from package based on setup: Random or Selected sequence
 - Serial Numbers – Scan from package or key enter

```

09/19/07 Receipts 15:15
Comp:01 Purchases TS-WW1
PO#:013924 NH:01 001
01320 SCD
PROFESSIONAL COMPASS
U/M:EA Typ:Reg
Loc:A12345 Scn: 1
.....
Scn Item/R-Rvw/S-Skp/E-End
  
```

Wireless Warehouse
Automation System For FACTS

Primary Functions/Basic Operations

- **Purchase Orders: Receipts**
 - Lot Numbers – Scan from package, Enter new, or Auto-Generated (In-Flight only)
 - Quantities – Enter or Scan per displayed U/M
 - Count Blind – Count or scan without knowing expected quantity

```

09/19/07 Receipts 15:15
Comp:01 Purchases TS-WW1
PO#:013924 NH:01 001
01320 SCD
PROFESSIONAL COMPASS
U/M:EA Typ:Reg
Loc:A12345 Scn: 1
.....
Scn Item/R-Rvw/S-Skp/E-End
  
```

Wireless Warehouse
Automation System For FACTS

Primary Functions/Basic Operations

- **Sales Orders: Shipments**
 - Pick Ticket # – Scan or key enter
 - Location – Displayed for each product shown
 - Items – Scan from package or shelving based on Selected sequence (or Random)

```

09/19/07 Shipping 11:24
Comp:01 Sales TR-WW1
SO#:028574 NH:01 001
72804 SCD
4"X 6" 2MIL POLY BAG W/1"HDH
L4DDEEFF-001 Typ:Lot
U/M:EA Ord: 380
Loc: 123 Scn:
.....
Scn Lot#/R-Rvw/E-End/S-Skp
  
```

Wireless Warehouse
Automation System For FACTS

Primary Functions/Basic Operations

- **Sales Orders: Shipments**
 - Serial Numbers - Scan from package or key enter
 - Lot Numbers - Scan from package or key enter
 - Quantities - Enter or Scan per displayed U/M

```

09/19/07 Shipping 11:28
Comp:01 Sales TR-WN1
SO#:028574 WH:01 001
72804 SC#
6"X 6" 2MIL POLY BAG W/1"HD
L#DDEEFF-001 Typ:Lot
O/N:EA Ord: 380
Loc: 123 Sca:
*****
Scn Lot#/R-Rvw/E-End/S-Skp
  
```

Wireless Warehouse
Automation System For FACTS

Primary Functions/Basic Operations

- **Warehouse Transfers: Shipments**
 - Transfer Ticket # - Scan or key enter
 - Location - Displayed for each product shown
 - Items - Scan from package or shelving based on Selected sequence (or Random)

```

09/19/07 Shipping 16:18
Comp:01 Wsh Trans TR-WN1
WTF:700100 WH:01 001
00636 SC#
18 x 3/4 TYPE A PHILLIPS PAN
O/N:EA Ord: 100
Loc: B401 Sca:
*****
... Scn Lot#/R-Rvw/E-End/S-Skp
  
```

Wireless Warehouse
Automation System For FACTS

Primary Functions/Basic Operations

- **Warehouse Transfers: Shipments**
 - Serial Numbers - Scan from package or key enter
 - Lot Numbers - Scan from package or key enter
 - Quantities - Enter or Scan per displayed U/M

```

09/19/07 Shipping 16:18
Comp:01 Wsh Trans TR-WN1
WTF:700100 WH:01 001
00636 SC#
18 x 3/4 TYPE A PHILLIPS PAN
O/N:EA Ord: 100
Loc: B401 Sca:
*****
Scn Lot#/R-Rvw/E-End/S-Skp
  
```

Wireless Warehouse
Automation System For FACTS

Primary Functions/Basic Operations

- **Warehouse Transfers: Receipts**
 - Ticket # – Scan or key enter
 - Items – Scan from package based on setup: Random or Selected sequence
 - Serial Numbers – Scan from package or key enter

```

09/21/07 Receipts 15:20
Comp:01 Whse Trans TR-NM1
WT#:T00100 SH#00001 WH:02 001
00636 SCI
#R x 3/4 TYPE A PHILLIPS PAN
L#006918-001-002 Typ:Lot
D/M:EA
Loc:D104. Scn: 100
... Ent Loc/B-Back/ENT-Continue
  
```

Wireless Warehouse
Automation System For FACTS

Primary Functions/Basic Operations

- **Warehouse Transfers: Receipts**
 - Lot Numbers – Scan from package or key enter
 - Quantities – Enter or Scan per displayed U/M
 - Count Blind – Count or scan without knowing expected quantity

```

09/21/07 Receipts 15:20
Comp:01 Whse Trans TR-NM1
WT#:T00100 SH#00001 WH:02 001
00636 SCI
#R x 3/4 TYPE A PHILLIPS PAN
L#006918-001-002 Typ:Lot
D/M:EA
Loc:D104. Scn: 100
... Ent Loc/B-Back/ENT-Continue
  
```

Wireless Warehouse
Automation System For FACTS

Primary Functions/Basic Operations

- **Physical Inventory Counts**
 - Capture Quantities – Like standard FACTS
 - Items – Scan from package based on the standard selected sequence
 - Serial Numbers – Scan from package or key enter

```

09/24/07 Capture Qty 09:37
Comp:01 Physical Count TR-NM1
On Hand by Location
Start:FIRST
End:LAST
Type:SN Wh:01
Cutoff date:09/24/2007 (Sys)
...
END OF INPUTS
ENT-Continue/B-Backup
  
```

Wireless Warehouse
Automation System For FACTS

Primary Functions/Basic Operations

- **Physical Inventory Counts**
 - Lot Numbers – Scan from package or key enter
 - Quantities – Enter or Scan per displayed U/M
 - Count Blind – Count or scan without knowing expected quantity

```

09/24/07 Phys Count 09:44
Comp:01 Enter Counts TR-WN1
NH:01 .50GX.265X.062X SCB
STAINLESS STEEL FLAT WASHER
L#013871-001-001 Typ:Lot
U/M:EA
Loc: ( ) Sen:
.....
Sen Lot#/R-Rvw/E-End/S-Skp
/F1-Qcy/F2-Loc/F3-Reset

```

Wireless Warehouse
Automation System For FACTS

Primary Functions/Basic Operations

- **Adjustments**
 - Items – Scan from package or shelf, or key enter
 - Serial Numbers – Scan from package or key enter
 - Lot Numbers – Scan from package or key enter
 - Quantities – Enter or Scan per displayed U/M

```

09/24/07 Inv Adjust 09:47
Comp:01 Enter Adjust TR-WN1
NH:01 SCB+
00636 UM:EA
#8 x 3/4 TYPE A PHILLIPS PAN
L#006918-001 Typ:Lot
OH: 575 Sen: 25
.....
Sen Lot#/E-End/S-Save
/F1-Sub/F3-Qcy

```

Wireless Warehouse
Automation System For FACTS

Primary Functions/Basic Operations

- **Adjustments**
 - Adjustment Code – Enter or select from list (if allowed, otherwise pre-defined in control file)
 - Live update – Quantities are updated immediately and included on adjustment register

```

09/24/07 Inv Adjust 09:47
Comp:01 Enter Adjust TR-WN1
NH:01 SCB+
00636 UM:EA
#8 x 3/4 TYPE A PHILLIPS PAN
L#006918-001 Typ:Lot
OH: 575 Sen: 25
.....
Sen Lot#/E-End/S-Save
/F1-Sub/F3-Qcy

```

Wireless Warehouse
Automation System For FACTS

Primary Functions/Basic Operations

- **Item Repack**
 - Items - Scan from package or shelf, or key enter
 - Quantities - Enter or Scan per displayed U/M
 - Change U/M as needed

```

09/24/07  Inv Adjust  09:55
Comp:01  Repack Adjust  TR-NM1
NH:01      FRM  QM Before
F:01320      5102
T:
PROFESSIONAL COMPASS
UM:EA      NewF:  4002
Q: 300 NewT:
30079252013206.....
Scan TO Item/E-Back
  
```

Wireless Warehouse
Automation System For FACTS

Primary Functions/Basic Operations

- **Item Lot Transfers**
 - In-Flight option only
 - Items - Scan from package or shelf, or key enter
 - Original Lot Numbers - Scan from package or key enter
 - New Lot Numbers - Scan from package, Enter new, or Auto-Generated

```

09/24/07  Inv Adjust  10:04
Comp:01  Lot Trans  TR-NM1
NH:01      FRM
.500X.265X.062X
STAINLESS STEEL FLAT WASHER
Lot#013971-001-001
U/H:EA      Avl:  4360
Loc:A-3201   Scn:  1450
.....
Scan FROM/F3-TD/F3-DM/E-End
...
  
```

Wireless Warehouse
Automation System For FACTS

Primary Functions/Basic Operations

- **Item Lot Transfers**
 - Quantities - Enter or Scan per displayed U/M
 - Live update - Like adjustments, lot numbers and quantities are automatically updated and included on register

```

09/24/07  Inv Adjust  10:10
Comp:01  Lot Trans  TR-NM1
NH:01      TO
.500X.265X.062X
STAINLESS STEEL FLAT WASHER
Lot#.....
U/H:EA      Bal:  1000
Loc: B254   Scn:  430
.....
Scan TO Lot/F3-Beat
  
```

Wireless Warehouse
Automation System For FACTS

Primary Functions/Basic Operations

- **Item Reference Builder**
 - Enter or lookup Standard Part category
 - Handheld scanning of Manufacturer or Supplier Product numbers
 - Handheld scanning of FACTS Product numbers

```

09/24/07 Item Utility 10:20
Comp:01 Ref Builder TR-WK1
Code:OPC Universal Product Cod
Item#08181 SCF
GRAPHICS TEMPLATE
Pc1:379252081916
Pc2:
U/M:IP Conv: 5
... Accept Ref? ENT-Y/F4-B
  
```

Wireless Warehouse
Automation System For FACTS

Primary Functions/Basic Operations

- **Item Reference Builder**
 - Enter or select corresponding U/M (and related quantity)
 - Live update to Standard Part Number file

```

09/24/07 Item Utility 10:20
Comp:01 Ref Builder TR-WK1
Code:OPC Universal Product Cod
Item#08181 SCF
GRAPHICS TEMPLATE
Pc1:379252081916
Pc2:
U/M:IP Conv: 5
... Accept Ref? ENT-Y/F4-B
  
```

Wireless Warehouse
Automation System For FACTS

Questions and Answers

